

SOFITEL PARIS
BALTIMORE
TOUR EIFFEL

Live the French way

Totally refurbished by Les Deux Ailes

LUXURY - ICONIC - HISTORY

in the most beautiful district of Paris

The classic six-story Haussmannian façade exudes a truly unique architectural aesthetic

Thanks to its unique character, the Baltimore stands out in this neighbourhood in the heart of chic Paris



88 bis avenue Kleber - 75116 PARIS - FRANCE
T. +33 (0)1 44 34 54 54 - h2789@sofitel.com
www.sofitel.com/2789





OUR
LOCATION

Ideally located between
Champs-Élysées
Trocadéro
Arc de Triomphe
Eiffel Tower

Museums, shopping places,
historical monuments are
just steps from the hotel

The 16th arrondissement is the ultimate
stomping grounds for living the good life
and soaking up the charm of Paris !

YOUR
PARISIAN
HOUSE

103 rooms including 28 suites

Sofitel MyBed concept

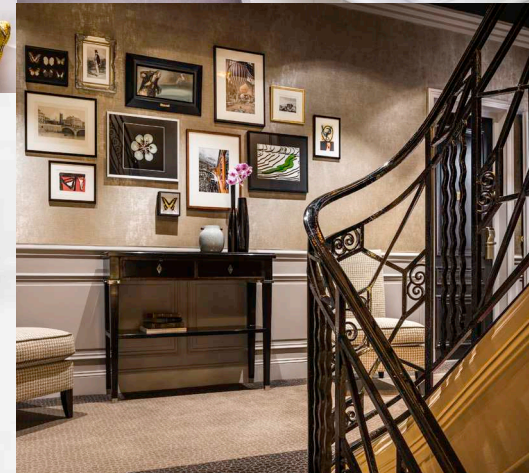
Balconies with wrought-iron balustrades
and beautiful red geraniums

Hermes amenities in rooms

Contemporary and intimist atmosphere

Luxury design inspired by Gustave Eiffel

Feel at home in the heart of Paris !





OUR
PUBLIC
AREAS



Welcome Wall named « Tom »
is your virtual advisor

Modern and luxury design

Spacious and luminous lobby

Library and fireplace for tea time



Baltimore bar open from 8am to midnight

Catering service is available

YOUR
GASTRONOMIC
EXPERIENCE

CARTE BLANCHE RESTAURANT

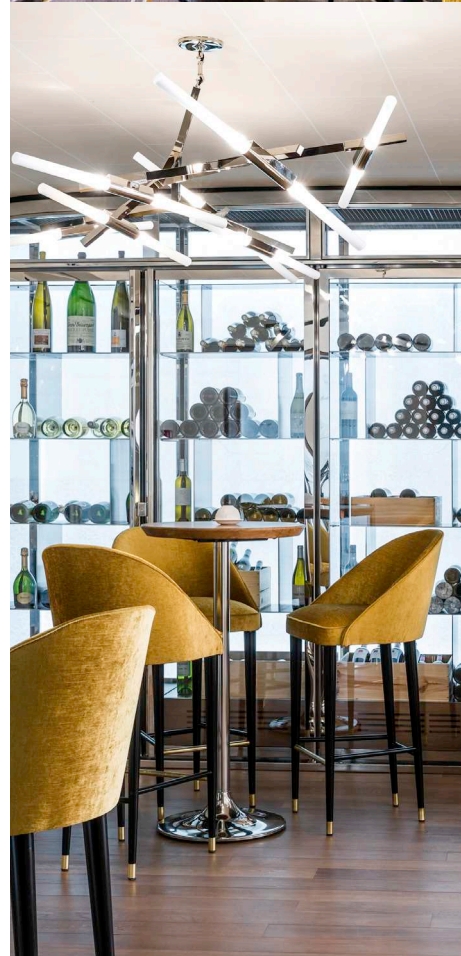
Give « carte blanche »
to Chef Jean-Philippe Perol

A new menu is created each month
to highlight seasonal products

Open from Monday to Friday

Lunch : noon - 2pm / Dinner : 7:30pm - 10pm

Wine cellar with an
outstanding selection of wines





YOUR
MEETING
EXPERIENCE

4 private rooms up to 90 persons

All menus are signed by our Chef

Perfect location for your meetings

SALONS/MEETING ROOMS	SURFACE M ²	SURFACE FT ²	HAUTEUR/ HEIGHT M/FT	THEATRE	SALLE DE CLASSE/CLASSROOM	CABARET	TABLES U/ U-SHAPE	BOARDROOM	BANQUET	COCKTAIL
TROCADERO	102 (12X8,5)	1097,9 (39,4X27,9)	2,5M/8,2FT	90	60	40	34	32	60	120
KLEBER	40 (6,0X6,5)	430,6 (21,3X19,8)	2,2M/7,2FT	30	24	-	16	18	27	30
FOCH	30 (5,5X5,5)	324,0 (18,0X18,0)	2,2M/7,2FT	20	15	-	10	12	18	20
KLEBER & FOCH	70 (6,0X12,0)	753,5 (19,7X39,4)	2,2M/7,2FT	40	-	-	-	-	45	70
EIFFEL	45 (9,5X4,5)	484,4 (31,2X15,4)	2,2M/7,2FT	-	-	-	-	18	-	-
SUITE SIGNATURE EIFFEL	17,3 (3,0X5,8)	186,2 (9,8X19,0)	2,5M/8,2FT	10	-	-	-	8	8	20
RESTAURANT	90	538,2	3,4M/11,2FT	-	-	-	-	-	60	100
CAVE A VIN/WINE CELLAR	14 (3,4X4,0)	150,7 (11,2X13,1)	2,5M/8,2FT	-	-	-	-	-	-	20
BAR	32	344,4	2,5M/8,2FT	-	-	-	-	-	-	50